

For General Industrial and Plumbing Applications

Job Name _____
 Job Location _____
 Engineer _____
 Approval _____

Contractor _____
 Approval _____
 Contractor's P.O. No. _____
 Representative _____

Series 6/P6 MIDI Check Valves

Series 6 will operate efficiently in silence all of the functions of a swing check or vertical lift check valve. These are not suggested for installation in sewage ejector piping.

Series P6 is a 1/4" NPT plastic check valve.

Features

Series 6

- Elastomer seat
- Installation in horizontal or vertical position
- Low pressure drop; low opening pressure
- Positive back stop
- Brass body

Series P6

- Plastic check valve
- Extremely low cracking pressure
- Full flow capabilities
- Bubble-tight seating
- Corrosion-resistant
- NSF approved grade acetal body

Applications

General Industrial and Plumbing

OEM applications

⚠ WARNING

Do not use for reciprocating air compressor service.

Pressure - Temperature

Series 6

Pressure: 200 psi (13.8 bars)

Maximum temperature: 180°F (82°C)

Series P6

Pressure: 235 psi (16.2 bars)

Maximum temperature: 150°F (66°C)

Sizes - Connections

NPT threaded connections

Series 6 Female X Female only

Sizes: 1/4", 3/8", 1/2", 3/4", 1"

Series P6

Sizes: 1/4"

To order P6 check valves, use the following:

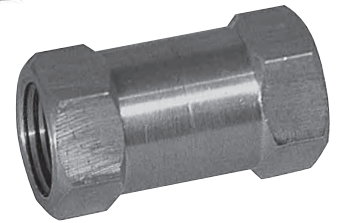
01 for F x F (female x female)

02 for M x F (male x female)

Example: 1/4" P6-02



1/4" - 3/8" Watts 6



1/2" - 1" Watts 6

Watts P6 Series



Male x Male Watts P6



Female x Female Watts P6



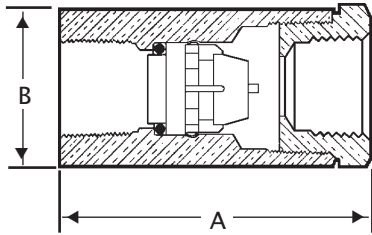
Unique Positive Check Module

Watts product specifications in U.S. customary units and metric are approximate and are provided for reference only. For precise measurements, please contact Watts Technical Service. Watts reserves the right to change or modify product design, construction, specifications, or materials without prior notice and without incurring any obligation to make such changes and modifications on Watts products previously or subsequently sold.

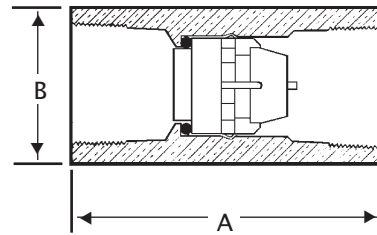
WATTS[®]

Dimensions – Weights

6 - Sizes: 1/4" - 3/8"

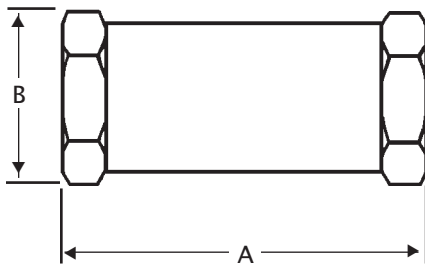


6 - Sizes: 1/2" - 1"

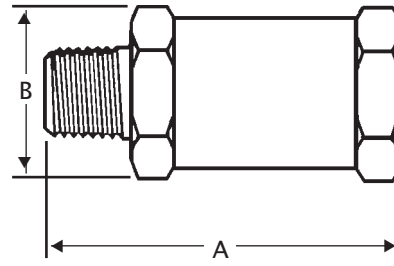


Direction of Flow →

1/4" P6-01 - Female x Female



1/4" P6-02 - Male x Female



SIZE	MODEL	DIMENSIONS				WEIGHT	
		A		B		lbs.	kgs.
<i>in.</i>		<i>in.</i>	<i>mm</i>	<i>in.</i>	<i>mm</i>		
1/4	6	2	50	1	25	.31	.14
3/8		2	50	1	25	.31	.14
1/2		2	50	1	25	.31	.14
3/4		2 1/2	64	1 1/4	32	.63	.28
1		3	76	1 1/2	38	.88	.40
1/4	P6 (01/02)	2 1/8	54	1	25	.31	.14

Cv RATING

SIZE	MODEL	ORIFICE		
		<i>in.</i>	<i>mm</i>	<i>Cv.</i>
1/4	6	3/8	10	5.9
3/8		3/8	10	5.9
1/2		3/8	10	5.9
3/4		1/2	13	11.5
1		3/8	16	17.2
1/4	P6	3/8	10	5.9



A Watts Water Technologies Company



ISO 9001-2008
CERTIFIED

USA: Tel: (978) 688-1811 • Fax: (978) 794-1848 • www.watts.com
Canada: Tel: (905) 332-4090 • Fax: (905) 332-7068 • www.watts.ca