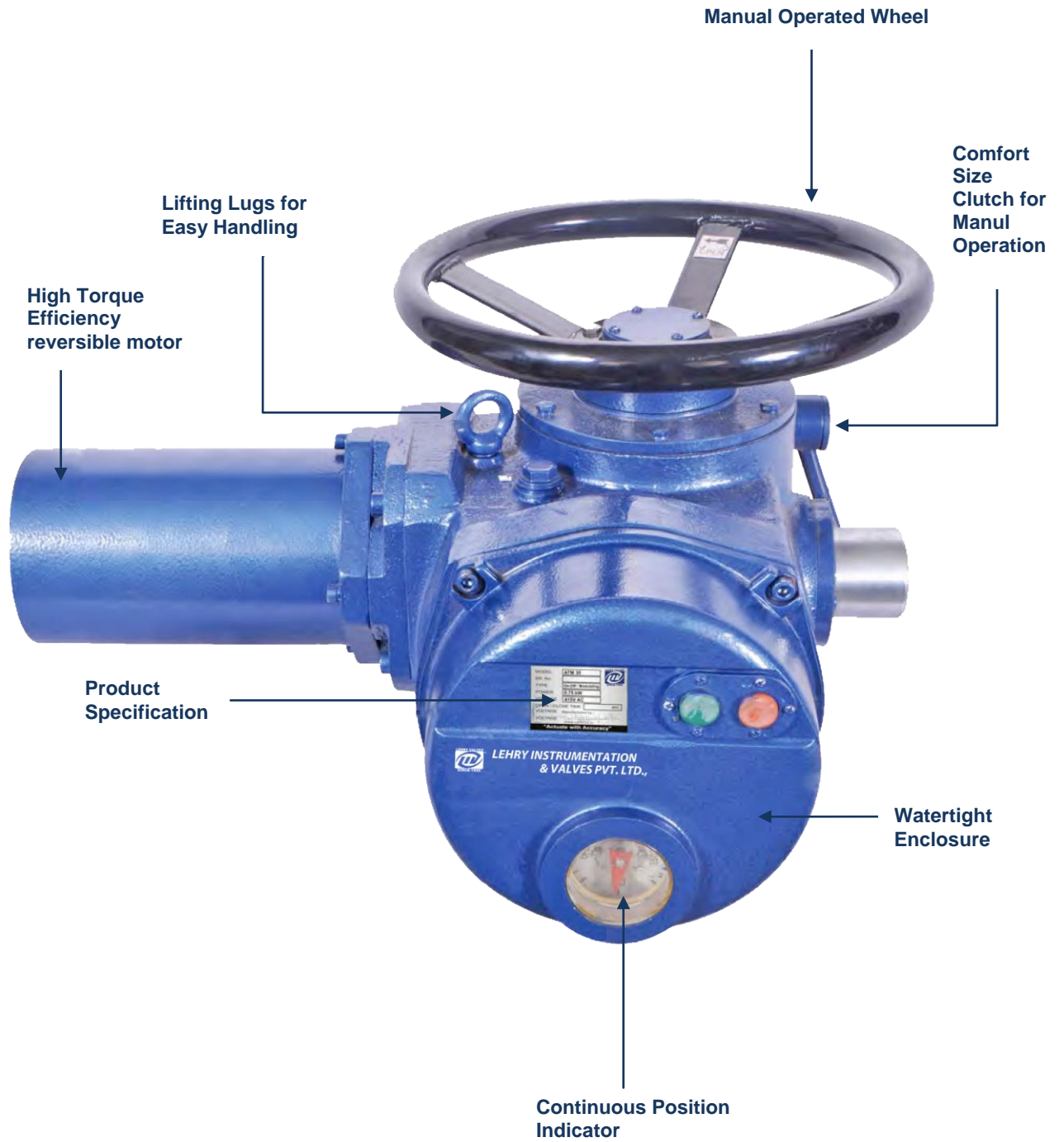


LEHRY



ATM SERIES THREE PHASE MULTI - TURN



Key Features : -

SUPPLY VOLTAGE

- ❖ 415 VAC- (+ 10%), 50/60 Hz
- ❖ 380 V AC, 460V AC (Available on request)

ENCLOSURE - IP 67 / 68

- ❖ Weatherproof- IS / IEC 60529
- ❖ Flameproof or Ex-Proof- IS / IEC 60079 I Zone II, Gas Group lib T4

TORQUE RANGE

- ❖ 50Nm - 2400Nm

MANUAL OVERRIDE

- ❖ Advanced design with Auto Deelutoh Mechanism to prevent user from injury

INTEGRAL STARTER UNIT

- ❖ Selector Switches Open / Stop / Close
Auto / Manual or Remote / Local
- ❖ Indicator Lamps Open / Close / Error

VARIOUS OPTIONS

- ❖ ON/OFF Type
- ❖ Modulating Control (Signal Input - 4 ~ 20mA/1 ~ 5V DC / 2 - 10V DC).
- ❖ Potentiometer Feedback (4 - 20mA).
- ❖ Auxiliary Limit Switches (2 Units).
- ❖ 2 Wire for ON/OFF Operation.

Widely Used in Fields Such as : -

- ❖ Water Treatment
- ❖ Municipal Water Supply Board
- ❖ Petroleum
- ❖ ChemLcaL Industry
- ❖ Power Plant
- ❖ Metallurgy
- ❖ Pharmacy
- ❖ Paper Industry
- ❖ Energy
- ❖ Textile
- ❖ Food Processing
- ❖ Automation etc...

Motorized Valves : -

- ❖ Gate Valves
- ❖ Knife Gate Valves
- ❖ Globe Control Valves
- ❖ Pinch Valves

MANUFACTURING STANDARDS : -

- ❖ Actuator Manufacturing Standard
IEC / EN 5714 - 2 (Electrical Actuator for Industrial Valves)
- ❖ Actuator Enclosure Standard - IP 67 / 68
IS / IEC 60529 - 2009 (Degree of Protection provided by Enclosure)
- ❖ Actuator Motor Standard
IEC-60034- 1 (Rotating Electrical Machines)
IS-325 (Three Phase Induction Motor)
- ❖ Actuator Mounting Standard
ISO 5211

APPLICABLE DIRECTIVES

- ❖ EC Machinery Directive - 2006 / 42 / EC
- ❖ Low Voltage Directive - 2006 / 95 / EC
- ❖ EMC Directive- 2004 / 105 / EEC

Actuate with Accuracy



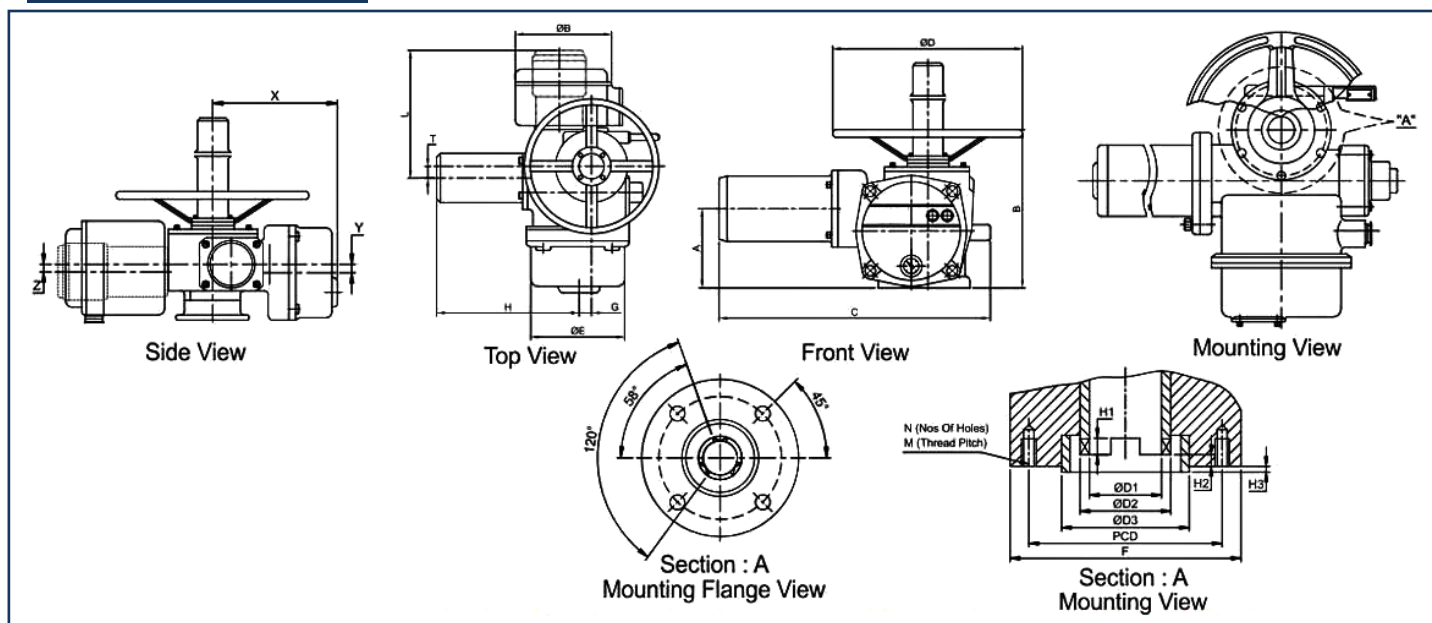
Multi-Turn Actuator

**TECHNICAL DATASHEET : -
STANDARD SPECIFICATIONS**

Model No:	Max Torque NM	Motor Kw	Actuator RPM	415 V AC Motor Current			Acceptable Stem Ø mm
				START (A)	RUN (A)	LOCK (A)	
ATM 5	50	0.18	36	3.8	0.87	3.8	30
ATM 10	100	0.25	18	5.2	1.2	5.2	34
ATM 10	100	0.37	36	6.5	1.5	6.5	34
ATM 20	200	0.55	18	8	2.2	8	36
ATM 20	200	0.75	36	13.5	2.7	13.5	36
ATM 20	200	1.1	72	17	3.1	17	36
ATM 30	300	0.75	18	13.5	2.7	13.5	36
ATM 30	300	1.1	36	17	3.1	17	36
ATM 60	600	1.5	18	21	4.3	21	65
ATM 60	600	2.2	36	28	6	28	65
ATM 90	900	2.2	18	28	6	28	80
ATM 90	900	3	36	32	8.5	32	80
ATM 120	1200	3	18	32	8.5	32	80
ATM 120	1200	4	36	55	13	55	80
ATM 240	2400	5.5	18	80	13	80	100
ATM 240	2400	7.5	36	105	16	105	100

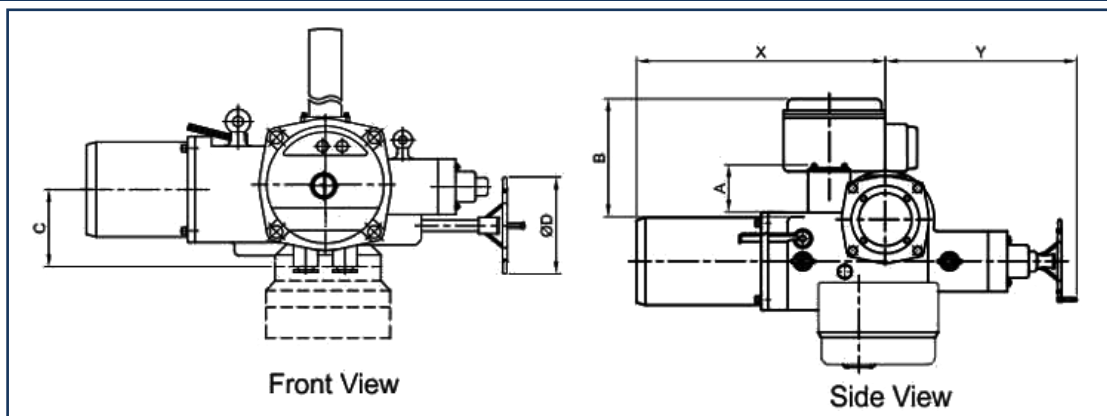
Note : Specification mentioned here are subject to revision without notice due to continuous product improvements.
(Rev.-1)

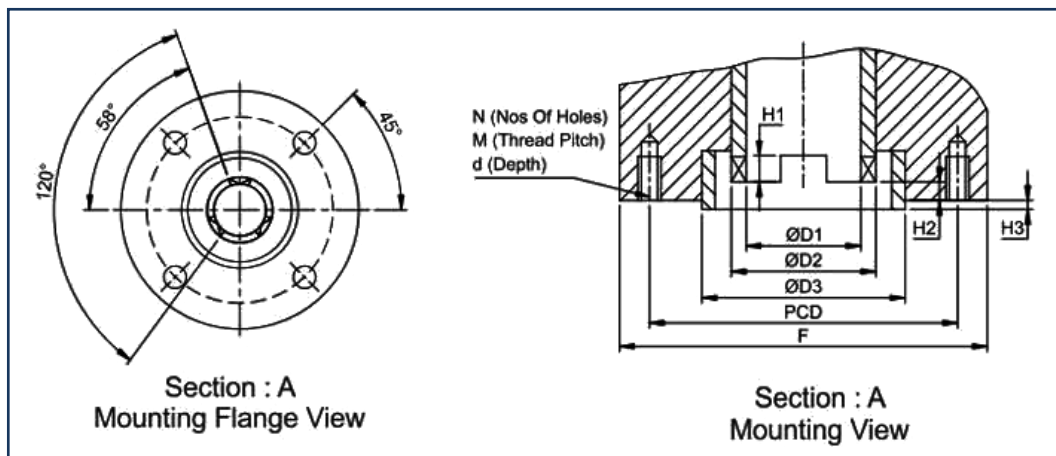
DIMENSIONAL DETAILS : -



(ALL DIMENSIONS ARE IN MM)

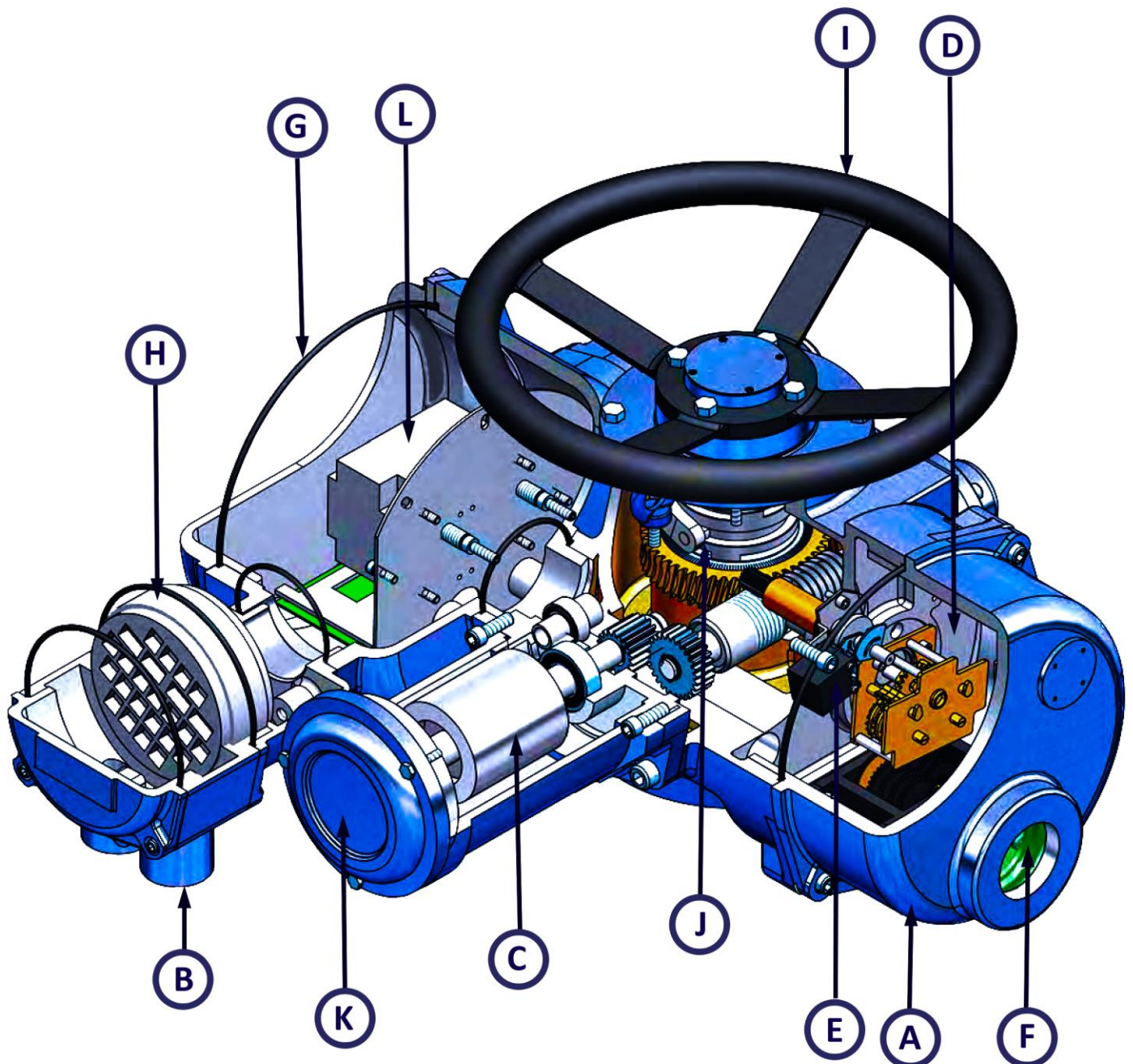
Model No:	A	B	C	ØD	X	Y	Z	ØB	L	T	H	G	ØE	ØD1	ØD2	ØD3	F	PCD	H1	H2	H3	N	M
ATM 05	137	300	552	305	244	30	44	216	181	30.5	391	23	200	38	50	70	125	102	7	2	3	4	10
ATM 10	137	300	552	305	244	30	44	216	181	30.5	391	23	200	38	50	70	125	102	7	2	3	4	10
ATM 20	137	300	552	305	244	30	44	216	181	30.5	391	23	200	38	50	70	125	102	7	2	3	4	10
ATM 30	137	300	552	305	244	30	44	216	181	30.5	391	23	200	38	50	70	125	102	7	2	3	4	10





(ALL DIMENSIONS ARE IN MM)

Model No:	A	B	C	X	Y	ØD	ØD1	ØD2	ØD3	F	PCD	H1	H2	H3	N	M	d
ATM 60	107	280	144	545	386	305	67	84	100	175.0	140	9	6	3	4	16	25
ATM 90	113	286	148	578	447	305	67	84	100	175.0	140	9	6	3	4	16	25
ATM 120	On Request																
ATM 240	On Request																



A) ENCLOSURE

ATM series actuators are available in both Weather Proof and Flame Proof (Ex-Proof) enclosures. These enclosures are watertight to IP 67 / IP 68. The enclosures are hard enodized which provides resistance from high temperatures, acids, alkali and remain water proof and dust proof. All the joints On the enclosure are armed with a waterproofing seal making it suitable for mounting in extreme outdoor environment.

Enclosure types with ambient temperatures are indicated below:

Weather Proof-(Standard} Manufacturing Standard IE060529	Rating IP63	Ambient Temperature -30°C to +70°C
Flame Proof- (Ex-Proof) Manufacturing Standard IS/IEC 60079	Enclosure Code Exd IIB T4 Exd IIC T4	Rating IP63 Ambient Temperature -20°C to +70°C

B) POWER SUPPLY

ATM series actuators are suitable for operation with the following Three Phase power supplies.

Standard Supply Voltages
415VAC : (± 10%), 50 / 60 Hz

Supply Voltages available on request
380 V AC : (±10%) 50/60 Hz
460 V AC : (± 10%). 50/60 Hz

Voltage Tolerance : ± 10% Applies for rated torque performance; duty cycle and speed not guaranteed
Frequency Tolerance : ± 5% Applies for rated torque performance; duty cycle and speed not guaranteed
Maximum Starting Voltage Drop : - 15% Actuator can start and run up to speed
Non Standard Tolerance : Available on request
UPC Systems : UPS systems should confirm to recognised supply standards such as EN60160 The above tolerances should not be exceeded

C) MOTOR

ATM series actuators are fitted with specially designed motors integral to the actuator. These motors can be broadly classified on the basis of their duty.

On-Off Type I Modulating Type (proportionate control)

- ❖ Three phase capacitor / run start squirrel cage induction type synchronized motor
- ❖ Continuous duty (S2-15 mins).
- ❖ Class F insulation with temperature rise restricted to Class B.
- ❖ Thermostat protection : Thermostats embedded in the motor end windings will directly sense motor temperature Thermostats will open circuit when set temperature is reached, thereby de-energising the motor and auto reset to continue operation once the motor has cooled off.
- ❖ Low inertia design.
- ❖ Nominal 50 starts per hour, 15 minutes rated based on a nominal torque of 33% or rated torque.
- ❖ Micro-processor based modulating control card.

Duty Rating

On-Off / Inching
Modulating

D) TORQUE SWITCH / SENSOR

Independent torque switches are provided, one for each direction of travel having 2NO + 2NC potential free contacts. Output torque is controlled by switching the motor off when the set torque limit has been reached, The entire torque switch drive assembly is individually replaceable.

E) POSITION SWITCH / SENSOR

Independent limit switches are provided, one for each direction of travel having 2NO + 2NC potential free contacts. Limit switches are operated by gear driven cams. which are mechanically linked to the driving devices. Easy setting of limit switches (counter-wheel-mechanism). If the switching point of limit switch gear has been overturned inadvertently by manual operation, the switching point itself does not change. No resetting is therefore required. All actuators have a continuous local mechanical position indicator

F) POSITION INDICATOR

Actuator are fitted with position indicator, having high strength and sunlight resistance making it suitable for outdoor environment. User can visualize position from any angle.

G) SEALS

Actuators enclosures are sealed with superior quality rubber O-rings forming an air-tight seal.

H) TERMINALS

ATM Series actuators are provided with a separately sealed terminal compartment Terminal screws and washers are supplied with the actuators.

I) HANDWHEEL

Manual handwheel is provided to enable operation in case of power failure or during installation of actuator on valve.

J) LUBRICATION

ATM Series actuators come with premium quality lubricants and enable smooth functioning of rotating components at a wide temperature range.

K) FINISH

The actuators are powder coated with corrosion proof epoxy coating.

L) CONTROL – LOCAL / REMOTE CONTROL

- | | |
|-------------------|------------------------------------|
| Selector switches | : open / stop / close. |
| Selector switches | : auto / manual or local / remote |
| Indicating lamps | : open / close / error. |
| Enclosure | : IP67 weather proof & dust proof. |
- ❖ Blinking LED lamp indication during open / close operation.
 - ❖ |Red - Fully Open | Green - Fully Closed.
 - ❖ Automatic phase rotation correction and phase loss protection
 - ❖ 24V DC voltage level is applied for remote control.
 - ❖ Easy and flexible user connection way.
 - ❖ Non-intrusive local control Smith with hall affect device to improve water proof feature.
 - ❖ Five passive, contacts to indicate the working status of the electric actuator and facilitating the monitoring of the electric actuator by DOS system
 - ❖ Operating mode select switch can be locked with ordinary lock to prevent improper operation.

OPTIONAL

FIELDBUS CONTROL OPTION

ATM seires actuators are available with the network interface cards to enable remote control and indication using digital 'bus' network systems communication to the control systems. Network, interface cards sucha as Modnus, Profilbus and Foundatiuon Fieldbus are compatible.

FAIL POSITION OPTION

In the event of loss of power supply a battery provides power to the control module/motor to update the valve position.

THREE PHASE MULTITURN VALVES

Gate Valve Multi-Turn Electrical Actuator Operated



Body & Bonnet :
 CI / WCB / WC 6 / WC 9 / SS
 304 / SS 316 / SS 316L / Alloy
 Steel / Duplex

Trims :
 13Cr. / 18Cr.8N / SS

Temperature :
 -20°C to 750°C

Ends :
 Flanged to 150# / 300# / 600#
 / 900# / 1500# / 2500#

Design & Manufacture STD. :
 API 600 / BS 1414 / MSS-
 SP80 / BS5352

Globe Valve Multi-Turn Electrical Actuator Operated



Body & Bonnet :
 CI / WCB / WC 6 / WC 9 / SS
 304 / SS 316 / SS 316L / Alloy
 Steel / Duplex

Trims / Plug :
 13Cr. / 18Cr.8N / SS

Seat :
 Teflon / Metal Seat (Class IV /
 VI)

Ends :
 Flanged to 150# / 300# / 600#
 / 900# / 1500# / 2500#
 Lugged to ANSI 16.5 RF
 (150#)

Design & Manufacture STD. :
 API 600 / BS 1414 / MSS-
 SP80 / BS5352

Pinch Valve Multi-Turn Electrical Actuator Operated



Body & Bonnet :
 CI / WCB / Aluminium / SS
 304 / SS 316

Trims :
 13Cr. / 18Cr.8N / SS

Temperature :
 Upto 180°C

Ends :
 Flanged to DIN / ANSI / BS /
 IS

Elastomer Sleeve
 Natural, Nitrile, EPDM,
 Neoprene, Hyplon

Medial :
 Abrasive Corrosive
 Application, Alkaline, Slurries,
 Viscous Fluid , Sludge

Knife Gate Valve Multi-Turn Electrical Actuator Operated



Body & Bonnet :
 CI / WCB / SS 304 / SS 316 /
 Alloy Steel

Knife Plate :
 CI / WCB / SS 304 / SS 316 /
 Alloy Steel

Seat :
 Nitrile / Silicon / Metal to Metal

Ends :
 Din PN 10 Flanged / Lugged
 to ANS 16.5 RF (150#)

Design & Manufacture STD. :
 MSS SP-81

Packing :
 PTFE / Graphite

Slide Gate / Guillotine Damper Valve Multi-Turn Electrical Actuator Operated



Body & Bonnet :
 IS 2062 MS / SS400
 Galvanised Steel

Seat :
 Nitrile (NBR) / EPDM / VITON

Leakage :
 Upto 99% Sealing Efficiency
 Class II/ III / IV (As per FCI
 70-2)

Temperature :
 -20°C to 750°C

Ends :
 Wafer / Double Flanged DIN
 24154 PN 6 / PN 10 / PN 16

Butterfly Valve with Multi-Turn Electrical Actuator (Worm Gear Box) Operated



Body & Bonnet :
 CI / DI / WCB / SS 304
 SS 316 / SS 316L / Alloy
 Steel / Duplex

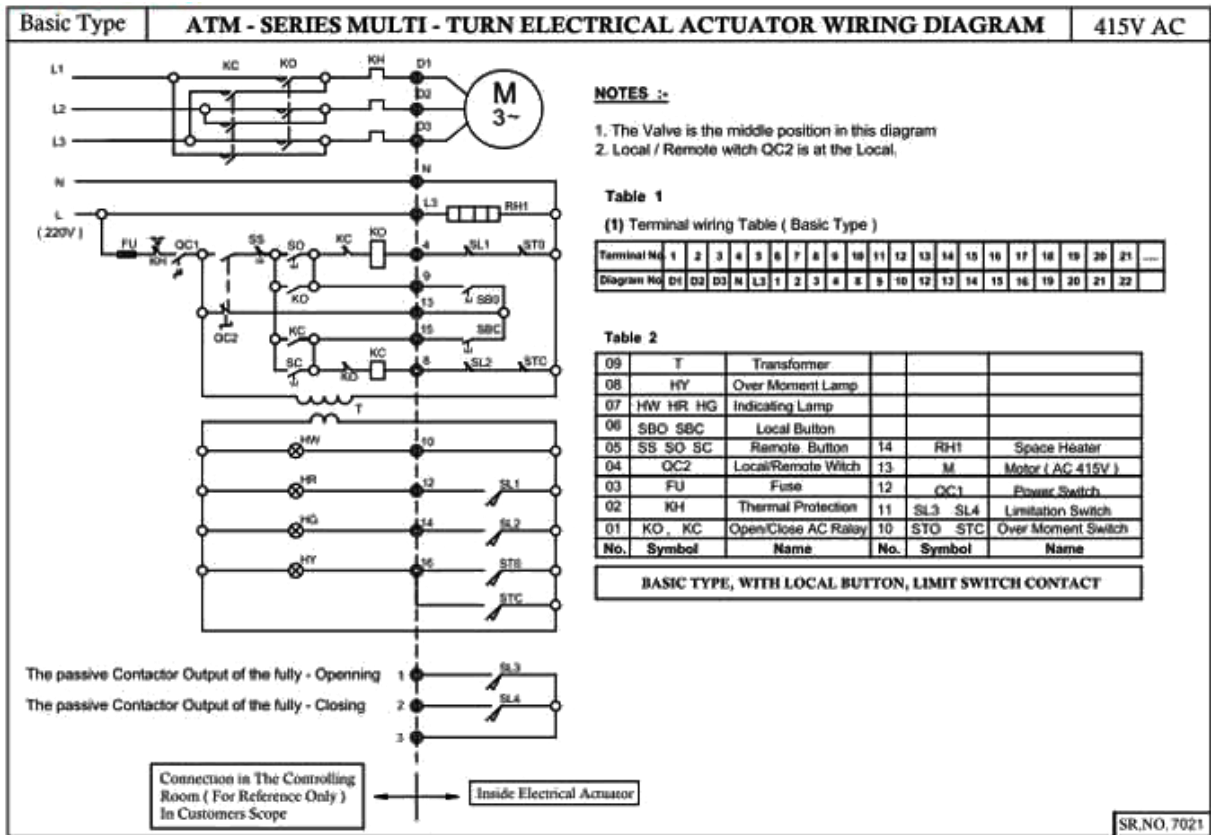
Seat :
 Nitrile (NBR) / EPDM / VITON
 PTFE

Ends :
 Wafer / Double Flanged / Lug
 Type

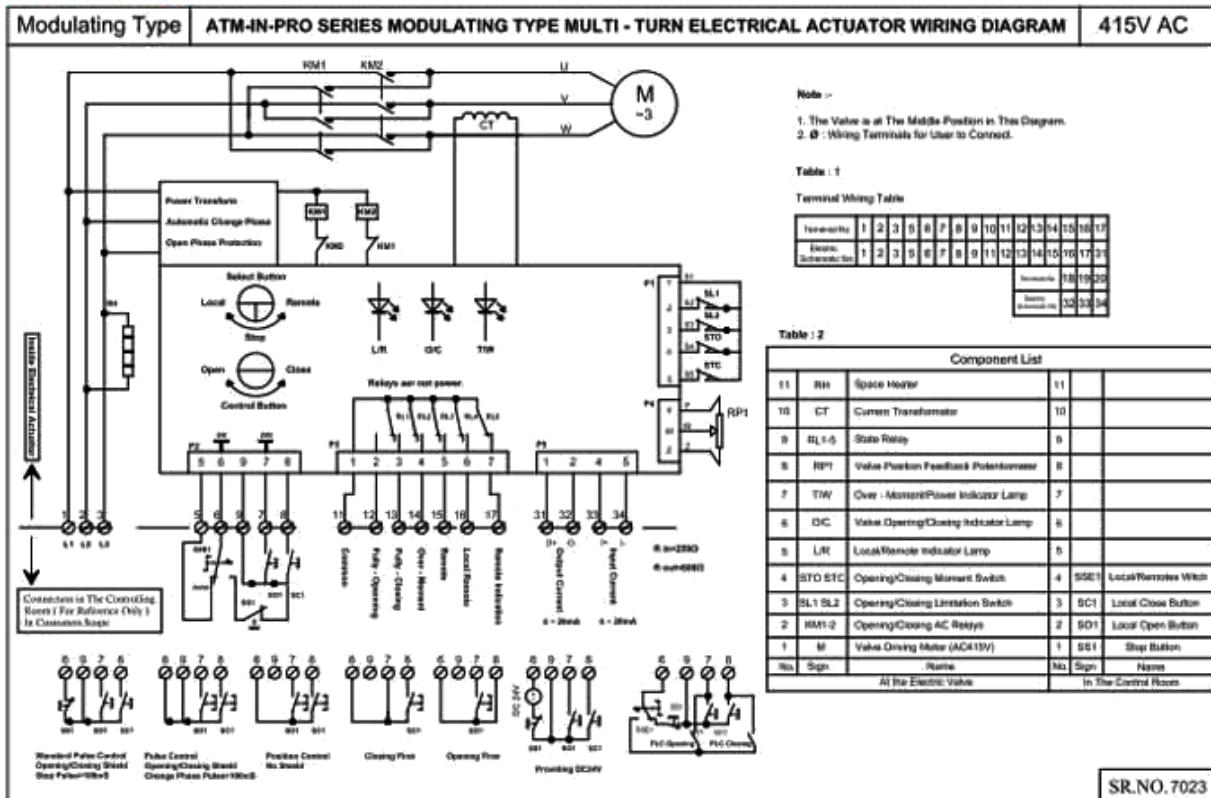
Design & Manufacture STD. :
 API 609 Category A / BS 5155
 MSS SP-67 / AWWA C-504

WIRING DIAGRAM

On / Off Duty



Modulating



Lehry Instrumentation & Valves Pvt. Ltd.,

"Lehry Chambers" #78 (Old No: 51) Sembudoss Street,
P.B No.1506, Parrys, Chennai - 600 001.
Phone : 044 25226995/25225185/25226187/42163823/
42625620/42625621. Fax : 044 25231715
Email : info@lehry.com / Website : www.lehryvalves.com
Branches : Chennai, Bangalore, Hyderabad, Mumbai, Noida, Pune