

LPG / MEDICAL GAS BALL VALVE

LEHRY MAKE Brass ball Valve Screwed End. Suitable for Gas

Specification :-

- ❖ Forged Brass Body , Chrome Plated Ball
- ❖ Nickel Plated
- ❖ Working Temperature : -20°C - 60°C
- ❖ Working Pressure : MOP (System 3)
- ❖ Threaded Ends : F/F, F/M, M/M,
- ❖ Steel Lever Handle and T AL Handle
- ❖ Products Conform to EN331 : 1998/A1 : 2010
- ❖ CE Approved with High Temperature Test : 650°C

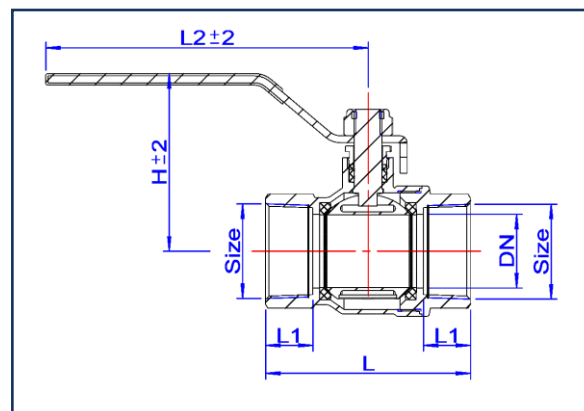
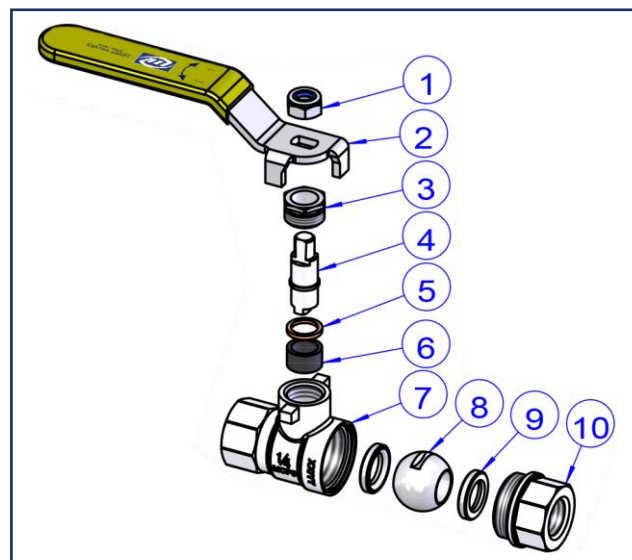
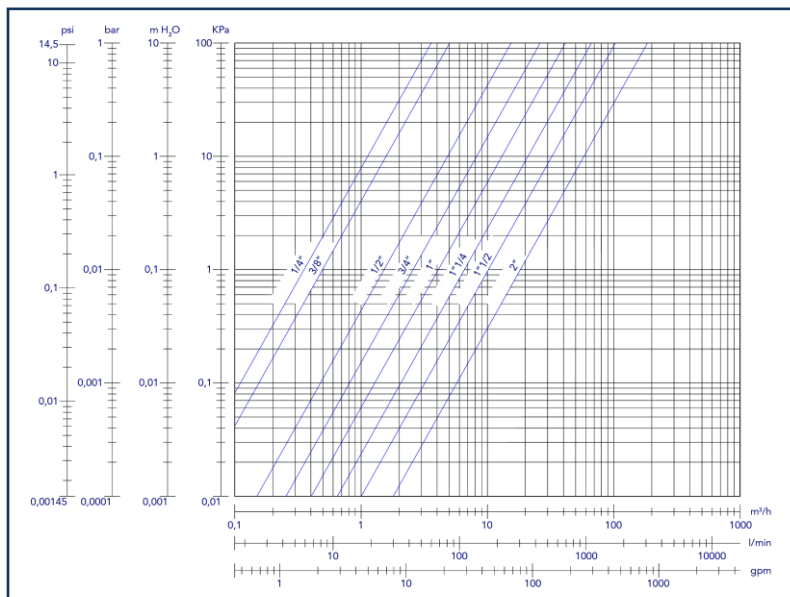
Technical Details :-

SL. No	Description	Material	Qty
1	Locknut	Steel with Nickel Plated	1
2	Lever	Steel with Dacromet Plated	1
3	Packing Nut	Brass with Nickel Plated	1
4	Stem	Brass with Nickel Plated	1
5	Brass Disk	Brass	1
6	Packing	Graphite	1
7	Body	CW617N with Nickel Plated	1
8	Ball	Brass with Chrome Plated	1
9	PTFE Seat	PTFE with WRAS Approved	2
10	Bonnet	CW617N with Nickel Plated	1

Dimensions :-

(All Dimension are in mm)

SIZE	DN	L	L1	L2	H	Weight (G)
1/4"	8	46	12	89	41	145
3/8"	10	46	12	89	41	132
1/2"	15	58.9	15.5	98.5	48.3	203
3/4"	20	66.9	17	98.5	51.8	294
1"	25	77	19.5	115	60.7	471
1-1/4"	32	89	20.5	140	76.7	729
1-1/2"	40	98	20.5	140	82.8	1002
2"	50	122	26	165	96	1656



Lehry Instrumentation & Valves Pvt. Ltd.,

"Lehry Chambers" #78 (Old No: 51) Sembudoss Street,
P.B No.1506, Parrys, Chennai - 600 001.

Phone : 044 25226995/25225185/25226187/42163823/
42625620/42625621. Fax : 044 25231715

Email : info@lehry.com / Website : www.lehryvalves.com

Branches : Chennai, Bangalore, Hyderabad, Mumbai, Noida, Pune